

Mode d'emploi

1 • Portfolio

Each of your works is automatically saved in the portfolio. You can give it a name, view it in a slideshow, send it as a postcard, hang it in the Museum, save it to your hard drive, print it or recycle it.

2 • Canvas

The drawing tools include a palette of colours, a halftone tool, a texture palette, a transparency tool, a stroke size selector, and a water drop for smudging.

You can make or unmake strokes as many times as you like. The animation tool lets you replay the construction of the image stroke by stroke at any desired speed.

To erase a part of a picture, use either white colour or the background colour to cover the part you wish to remove.

To reselect a stroke – colour, halftone, stroke and transparency –, hold down the shift key while clicking on the desired stroke in your image.

The smudging tool is found at the lower right of the halftone palette. It lets you extend or smear the colour just as you would rub a pastel mark with your finger or dilute ink with water. Combining this tool with different textures gives rise to many original and surprising effects.

3 • Information

title of the work, name of the artist, and comments

Here you sign your work, give it a title and add descriptive comments. If the image is sent to the Museum, the comments can be used to find it using a thematic search.

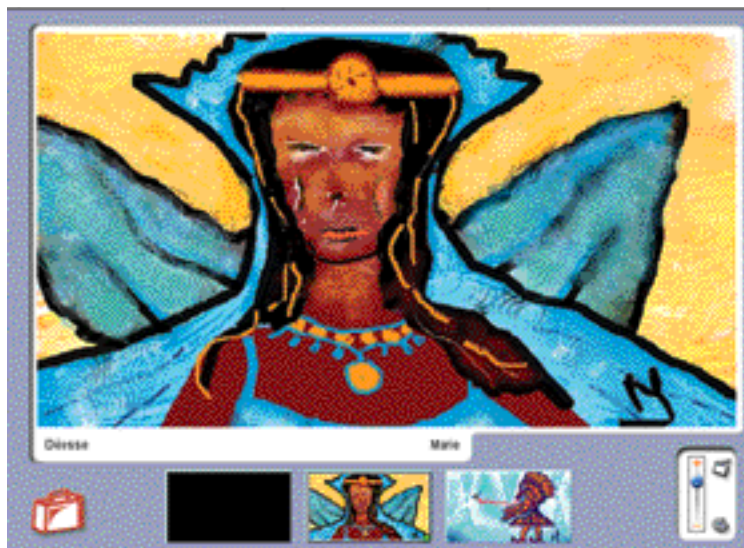
It is important to use the same artist's name for your works, especially if they will be sent to the Museum



4 • Slideshow

This option lets you watch all the images in your portfolio, just like a slideshow, and also replay the making of the image using the animation tool.

The small green square lets you zoom in to see details of the work.



5 • Sending an image to the LopArt Museum

This option lets you exhibit your work in the LopArt Museum. You must first register as an artist at the museum in order to open your own gallery and hang your favourite pictures there automatically.



6 • Sending a postcard

This option lets you send your work as a virtual postcard, via e-mail. Enter the recipient's e-mail address, your e-mail address, a title, a message, and...send it!



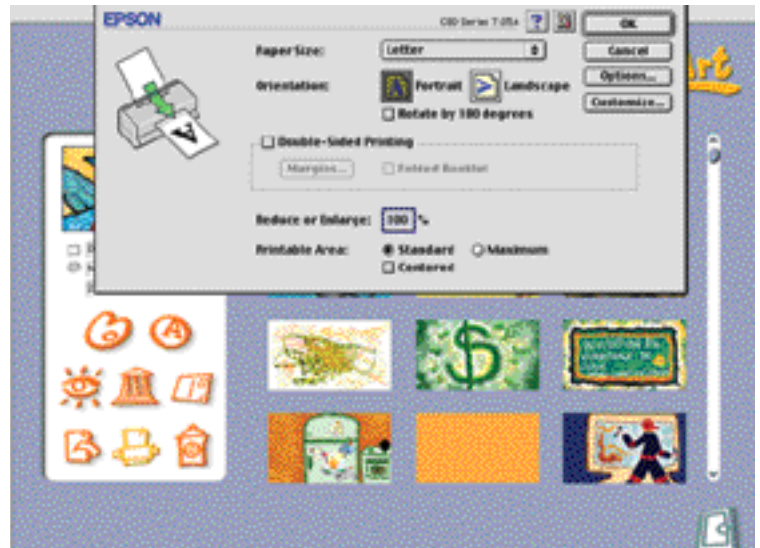
7 • Copying an image

This option lets you save a picture outside of LopArt, enabling you to use it in another application.



8 • Printing an image

This option lets you print your works. LopArt automatically uses the computer's printer.



9 • Recycling

This option lets you trash your unwanted pictures, so you can reuse the disk space.



Les produits logiques LopLop inc.

(T) 514_844-4994 - (F) 514_844-3732 - (E) lopart@loppop.com - (W) lopart.net - loppop.com